



# COMPANY PROFILE

Ver. 2014



LINKADATA  
SECURE AND STRENGTH

# COMPANY PROFILE

**Linkadata** is a Data Center Solutions provider that deliver bright solutions to make your data **"Secure and Strengthen"** with smart design, and high technology in its development and operational



## **Vision**

*Being best partner in Data Center Solutions*

## **Mission**

*Providing a Data Center infrastructure, Monitoring and operation Solutions with smart design, high technology and quality service*

## **Strength & Capabilities**

*Our guarantee that we will provide the smartest design, high technology & Quality Service in its solution*

# SOLUTION

## Linkadata offers solution :

- *Data Center Consulting*
- *Data Center Development*
- *Mechanical & Electrical Solution*
- *Structure Data Cabling Solution*
- *Digital Information Board*
- *Data Center Infrastructure Management*
- *Application Services*
- *Maintenance & Operations*



## Linkadata

Capabilities provided for a Data Center Planning & Consulting typically include the following tasks :

- **Key Design Criteria Development**  
Establish Load, Availability, and Deployment Density Design Criteria
- **Site Surveys**  
Survey the Existing Conditions to Establish Facility Constraints
- **Assessment Services**  
Establish Recommendations for Upgrade and or It's Improvement
- **Design with Smart & Artistic Modeling**  
A Good Data Center Plan Pays for Itself, Cost Versus Availability will be concern, Accurate Critical Load Profiling that Standard and Not-so-Standard Practices



Our approach to every engagement starts with defining and understanding the project requirements for the data center and identifying the business objectives.

We protect your data center budget commitments by offering fixed-bid pricing wherever possible. However, for those projects where the design/build scope cannot be fully defined at proposal time, we also offer hourly rates.

Linkadata understands the only acceptable level of downtime is zero. Your performance is our concern and our reputation depend on it.



- *Electrical, Power Plant & Engineering*
- *Cooling System, Mechanical Engineering*
- *Architecture & Civil Work Engineering*
- *Fire Protection Systems Engineering*
- *Data & Racking Structural Engineering*
- *Security & Monitoring Systems*
- *Information Technology Systems*



## Effective Cable Architecture Design :

### Access layer **flexibility**

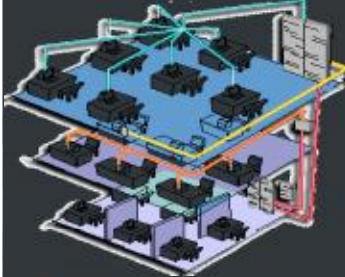
This is the ability to connect any device to another device, as necessary within the data center, computer room, server room, or other mission critical facility.

### Capacity and service **scalability**

Space should be left to allow for future growth; cables should be the highest grade available to accommodate future technologies.

### **High availability** and fabric stability

Cable designs and deployments must meet required uptime in terms of mean time between failures (MTBF); they should also be adaptable towards changing technologies.



We offer our customer a range of high quality general mechanical, electrical and instrumentation work for energy conservation (HVAC) including: System Planning, Installation, Optimization, Re-Engineering, Feasibility Study, Construction Management and Maintenance.



**Mechanical Services** such as Pipe work, Air-conditioning systems, Ventilation installations, Pressurized Air systems, Ductwork, Fire Fighting Installations, and Pumping Stations.

**Electrical Services** such as Switchgear, Power cabling, Power & Lighting Installations, Smoke Detection systems, CCTV systems, and Security Alarm systems, Data Cabling Installations, Lighting Protection and Street Lighting.

## SOLUTION

## DIGITAL INFORMATION BOARD

A **Digital Information Board** uses a combination of standard signage with a digital LCD screen and processor to display content dynamically. The main purpose of Digital Information Board is to communicate, to convey information.

Allows the use of combined multimedia in your messages (i.e. tables, text, rates, menus, video, graphics, scrolling notices, flash animation, posters and specials)



- *directory boards (commercial buildings)*
- *food and drink menus*
- *public information*
- *foreign exchange rates*
- *home interest rates*
- *airfares*
- *sales boards*

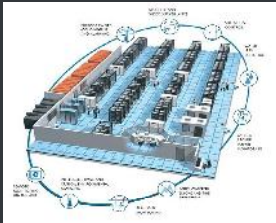


# SOLUTION

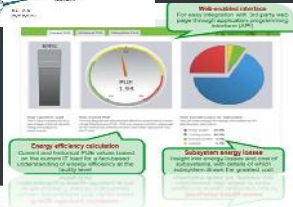
# DATA CENTER INFRASTRUCTURE MANAGEMENT

Data center infrastructure management (DCIM) is a category of solutions which were created to extend the traditional data center management function to include all of the physical assets and resources found in the Facilities and IT domains.

There are several trends driving the adoption of DCIM. These drivers include:



- Capacity Planning
- Asset Lifecycle Management
- Uptime and Availability enabler
- More efficient power and heat density cooling
- Data center consolidation and Tech Refresh
- Virtualization and cloud computing
- Increased reliance on critical IT systems
- Energy efficiency or Green IT initiatives



**Monitor Temperature, Humidity, Physical Security** The most common environmental threat in any server room or wiring closet is heat. Detect critical alert in facility security, and receive notifications when problems occur.

- **Plug and play:** Auto discovers everything on your network – hardware and software
- **Integrated:** Unified view of all your systems enables you to quickly identify and remediate issues
- **User-centric design:** Enables IT administrators of all levels to minimize time spent on routine tasks
- **Scalable:** 100-20k managed nodes per appliance
- **Low TCO:** All-in-one appliance includes hardware and software – nothing else to buy
- **Right Sized:** Three appliance configurations allow you to match the appliance with your needs



### Comprehensive end-to-end systems management

- **Integrated:** Pre-configured with the functionality required to solve your systems management challenges
- **Systems Deployment:** Centralized management and automation for efficient OS deployment and maintenance
- **Systems Management:** Complete systems inventory, application deployment, patch management, service desk and security solution

### LOAN PROCESSING SYSTEM

This system is an invaluable tool in the processing of credit/ loan that integrated with pipe line system. The system can process the credit of the front-end to back-end data source with The purposes of reporting (SID, LBU/LBBU,SLA Report, Pipe Line report, Performance Report) Business Process Management (BPM) references.

- **Pre-Screen** ; Pre loan process module, include : *Credit Portfolio Management, Account Planning, and Targeted Customer*
- **Loan Proposal**; origination process module, include : *Credit Risk Tools, Loan Origination System, and BI Checking integration*
- **Loan Review**; alert and performance review module, include : *Credit Risk Tools, Loan Monitoring System, partner accreditation and Credit Activity System*
- **Loan Settlement**; invoice and recovery settlement module, include : *Credit Risk Tools, Collection System, and Recovery Checking System*



**Maintenance and Managed Services** were offered for Data Center monitoring and controlling the critical element in order to maintaining maximum availability for your critical operations. Linkadata utilizing IP and Web technologies to over see and control critical support systems from just about anywhere.

Mission critical services require sophisticated monitoring, the following elements :

1. *Infrastructure Management & Control*
2. *Performance Monitoring & Capacity Planning*
3. *Security Administration including Physical, Network, Systems, Application*
4. *Site Monitoring of Systems, Networks and Data Center Infrastructures*



# PROFESSIONAL TEAM

**Linkadata** supported by the professional team, consist of:

## Data Center Solution:

1. Certified Data Center Expert (CDCE)
2. Certified Data Center Specialist (CDCS)
3. Certified Data Center Risk Professional (CDRP)
4. Certified Data Center Professional (CDCP)

## Mechanical & Electrical Solution:

1. Electrical Certified Professional (AKLI)
2. Mechanical Certified Professional (SKA)

## Structure Data Cabling Solution:

1. Panduit Certified Professional (PCT & PCI)
2. Authorized Systemax Engineer (ASE)
3. Nexans Certified Solution Partner (CSP)
4. ADC Krone Master Installer (AKM)
5. AMP Connect Design & Installation (AMP ACT)

## Application Services Solution:

1. Dell Certified KACE Engineer
2. Certified LANdesk Engineer (CLE)
3. Certified McAfee Security Specialist (CMSS)
4. Schneider StruxureWare Specialist



# PARTNERSHIP

For best solution **LINKADATA** supported by the professional partner :

## Data Center Solution:



## Structure Data Cabling Solution:



## Mechanical & Electrical Solution:



## Application Services Solution:



# PROJECT HIGHLIGHT

- **Data Center Consulting**

- Design & Planning DRC Balikpapan KemenKeu RI
- Redesign DC Pusdata KemenSesneg

- **Data Center Development**

- Elganet (The Energy Building) 1200m2
- Satata Neka Tama (cyber building) 700m2
- Petronas Carigali (Talavera 2 Building) 400m2
- Tempo Data System (Tempo Building) 600m2

- **Data Center Infrastructure Management (DCIM)**

- Bank Mandiri, more than 6 DC
- Petronas, DC Talavera Building
- XL Axiata, Cyber 1 Building



- **Structure Data Cabling System**

- Bank Mandiri, Head Office
- Bank Mandiri, Branch Office
- Bank CIMB Niaga
- RS Harapan Kita
- Giant (Hero Group)

- **Digital Information Board**

- Pertamina, Head Office Building
- Pertamina, Balikpapan Building
- Pertamina, Prabumulih Building

- **Application Services**

- KemenKeu RI, Pusintek
- Bahana Sekuritas
- KemenHub, Pusdatin

- **Maintenance & Operations**

- KemenKeu; Pusintek, Dirjen Pajak.
- Tempo Data System (Group)
- Amway Indonesia

# CUSTOMER

Our customers are companies that have the vision to the development of Information Technology.

- PT. Bank Mandiri, Tbk
- PT. CIMB Niaga
- PT. Bank Saudara
- PT. Bank BPD Sulsel
- PT. Garuda Food
- PT. Solusi Media Semesta (SMS)
- Tempo Group
- Argo Manunggal Group
- PT. Satata Neka Tama (Satnet)
- PT. Tunas Ridean
- PT Pertamina
- Petronas Carigali
- Medco Energy
- JOB Pertamina
- PT. Elganet (Medco Group)
- PT. Husky Energy
- PT. Pama Persada, Tbk
- United Tractor
- Giant (Hero Group)
- RS Harapan Kita
- Kementerian Keuangan Pusintek
- Kementerian Keuangan Direktorat Jenderal Pajak
- Kementerian Perhubungan Pusdatin
- Kementerian Perindustrian
- Kementerian Perdagangan
- Kementerian Kesehatan







THANK YOU



LINKADATA  
SECURE AND STRENGTH